

Access Rules

Foot Access for anglers has been provided by the goodwill of landowners and is a privilege not a right. If access is not specifically identified then you must ask for permission or you may be trespassing which is a criminal offence. Please respect private property and abide by the access rules and code of conduct to ensure the continued use of these areas.

- Do not stray into paddocks or trample crops
- Avoid disturbing stock
- Do not climb on fences
- Leave gates as you find them
- Report any unusual fish captures or algal sightings to the Inland Fisheries Service
- Report illegal activities to Bushwatch 1800 333 000

Warning



ANGLING
REGULATIONS
APPLY



DEEP
WATER



STRONG
CURRENTS



ELECTRIC
FENCE



STEEP BANKS



CATTLE

Getting There

The River Leven can be accessed at a number of points including Ulverstone, Dial Range, Gunns Plains and Loongana.

Background

The River Leven is one of the few rivers in Tasmania that has not been dammed for irrigation or hydro development. The Loongana and Gunns Plains sections are highly rated trout fisheries and the estuarine section is recognised for its sea-run trout.

Recreational Fishery Management

The River Leven is managed as a wild trout fishery dominated by brown trout however the Leven also has a reputation as a rainbow trout fishery. Periodic stocking with wild rainbow trout at Loongana supplements natural recruitment. Regulations for separate sections of the river reflect the diversity of the fishery and recreational fishery management goals.

The River Leven is also recognised as a recreational whitebait fishery. Separate rules and regulations apply to whitebait - check the IFS website for details.

Code of Conduct

- Be aware of and comply with fishing regulations.
- Respect the rights of other anglers and users.
- Protect the environment.
- Carefully return undersized, protected or unwanted catch back to the water.
- Fish species and other organisms must not be relocated or transferred into other water bodies.

Seaward Limit

Inland angling regulations and licensing requirements apply upstream from the seaward limit which is the downstream side of the A1 road bridge.

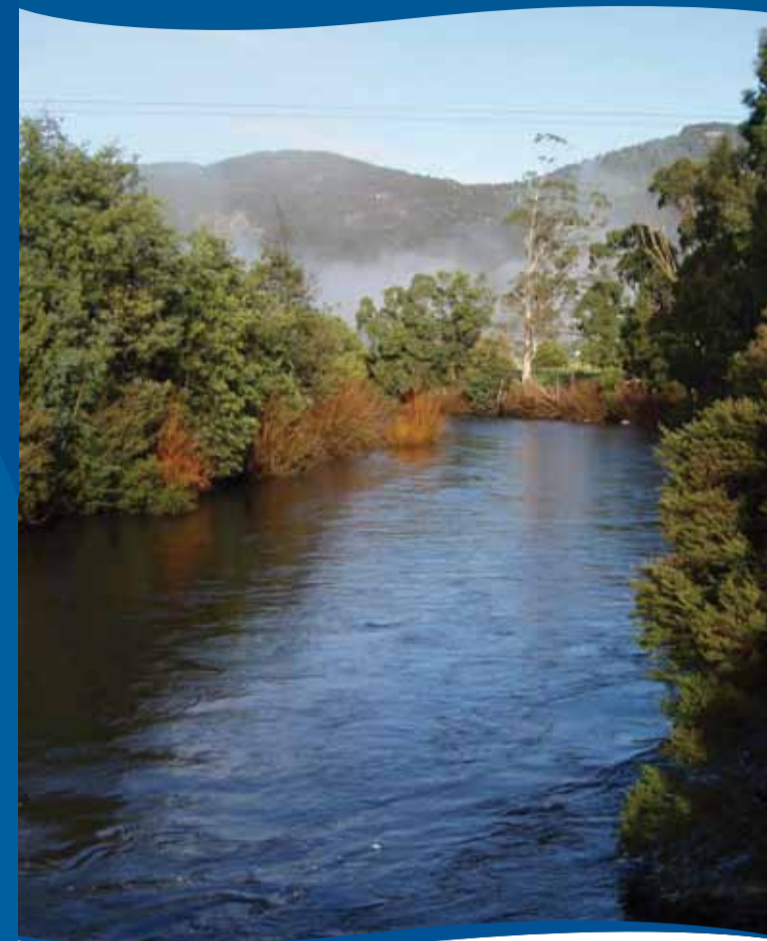


Tasmania
Explore the possibilities



River Leven Anglers Access

REGION: NORTH WEST



CONTACT DETAILS

17 Back River Road,
New Norfolk, 7140
Ph: 1300 INFISH
www.ifs.tas.gov.au



BU10548

Inland Fisheries Service



Angling Regulations

To fish in any open public inland water in Tasmania you must hold a current Inland Angling Licence unless you are under 14 years of age. A summary of the regulations are contained within the Tasmanian Inland Recreational Fishing Code.

Method	Season
 Fly fishing	Downstream from Allison Bridge: Open all year round. Between Allison Bridge and Loongana Bridge on C128 Loongana Road: From the first Saturday in August to the Sunday nearest the 30th April.
 Artificial lures	Upstream from Loongana Bridge: From Saturday nearest the 1st October to the Sunday nearest the 31st May.
 Bait fishing	

Note: The use of fish and fish products as bait is prohibited in all inland waters other than sections of rivers subject to tidal movement. Refer to the Tasmanian Inland Recreational Fishing Code for details on the capture of live bait.

Bag and Size Limits:

Species	Minimum size	Bag limit
Brown trout, Rainbow trout, River blackfish	220 mm	12*

*Total daily bag limit of 12 fish is for all species combined.

Protect our Waters

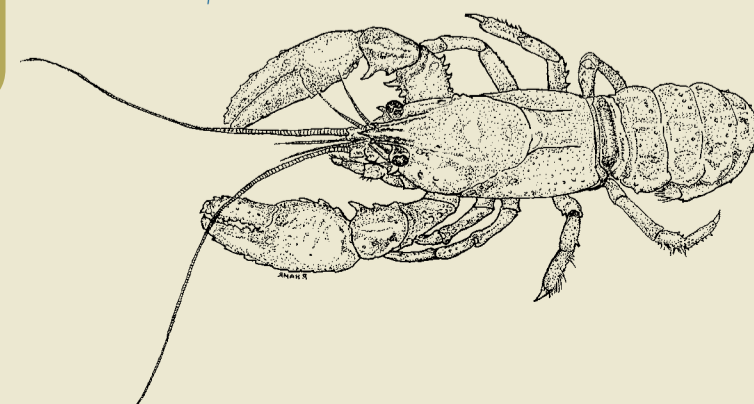
Recreational anglers have a responsibility to look after fisheries resources for the benefit of the environment and future generations.

- Do not bring live or dead fish, fish products, animals or aquatic plants into Tasmania.
- Do not bring any used fishing gear or any other freshwater recreational equipment that may be damp, wet or contain water into Tasmania. **Check, clean and dry** your fishing equipment before entering Tasmania.
- Do not transfer any freshwater fish, frogs, tadpoles, invertebrates or plants between inland waters.
- Check your boat, trailer, waders and fishing gear for weed and other pests that should not be transferred before moving between waters.
- Do not use willow (which is a plant pest) as a rod support as it has the ability to propagate from a strike.

Native Fish Management

The State and Commonwealth protected giant freshwater lobster (*Astacopsis gouldi*) is present within the River Leven catchment. This slow growing species can reach weights in excess of 5 kg but are commonly much smaller. They are wholly protected and if observed are not to be disturbed. Penalties for taking threatened or protected species are considerable costing those convicted as much as \$10,000.

Giant freshwater lobster



Angling Notes

Access has been provided by the goodwill of landowners. **Anglers must observe the access signs and where access is not specifically identified permission must be sought from the landowner.**

At Loongana Bridge and upstream the river is generally shallow and riffled, interspersed with deep pools. The water is tea coloured throughout and can be turbid after periods of heavy rain however it clears quickly. Best fishing is during the warm summer months when rising fish are reliable. Fishing with small lures, bait fishing and fly fishing can be productive. The chances of catching a rainbow trout are elevated in this section as a result of IFS stocking and the prescribed angling season.

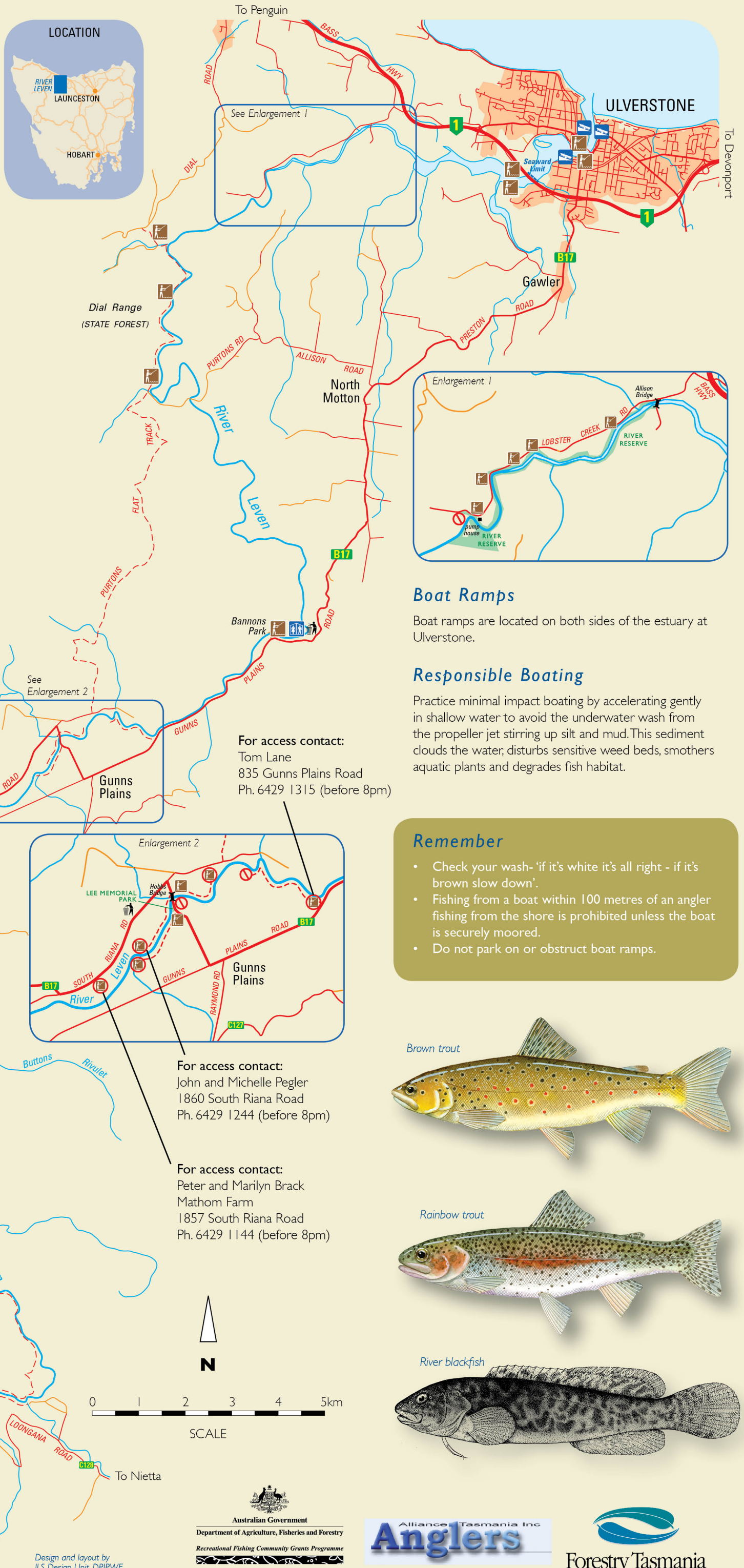
Between Loongana and Gunns Plains the river runs through the spectacular Leven Canyon. This section is only accessible on foot and is extremely challenging terrain.

At Gunns Plains the river flows through flat pasture although steep overgrown banks inhibit access to the river until low summer flows make much of the river wadeable. The best access points are at Bannons Park, Lee Memorial Park, Marshalls Bridge and Lowana Rd.

All methods of fishing can be practiced with equal success however the late summer and autumn are renowned for bait fishing with a single grasshopper.

The section of the river accessible in the Dial Ranges recreation area via the Penguin Cradle Trail is best described as 'tight' water surrounded by native forest suitable for wading and accurate light lure casting or fly fishing. The access track is of good standard and follows the river for approx 3km making this an excellent day walk.

The tidal reaches of the river from Ulverstone to the pump house on Lobster Creek Rd. are renowned for early season sea trout. Lure casting and fly fishing with whitebait patterns is recommended. The section of the river below Allison Bridge is open to angling all year round.



Brown and Rainbow trout illustrations Kristii Melaine
Blackfish illustration by V.Fulton
Giant freshwater lobster illustration by P.Hamr

- Anglers Access
- Access only with prior permission
- No access beyond this point
- Boat ramp
- Toilets
- Rubbish bin
- Foot access only
- Sealed road
- Unsealed road

For access contact:
Tom Lane
835 Gunns Plains Road
Ph. 6429 1315 (before 8pm)

For access contact:
John and Michelle Pegler
1860 South Riana Road
Ph. 6429 1244 (before 8pm)

For access contact:
Peter and Marilyn Brack
Mathom Farm
1857 South Riana Road
Ph. 6429 1144 (before 8pm)

Boat Ramps

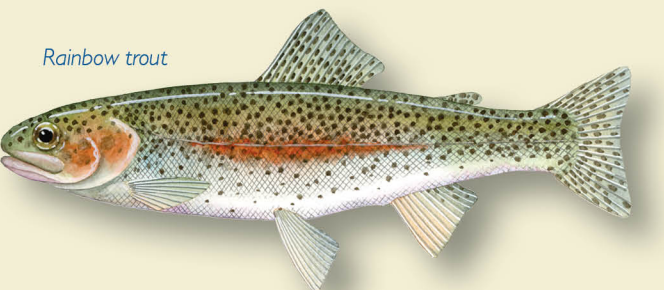
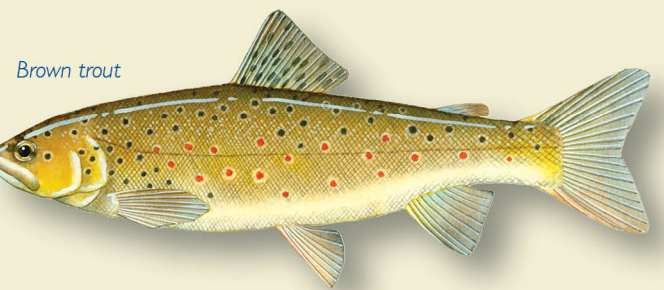
Boat ramps are located on both sides of the estuary at Ulverstone.

Responsible Boating

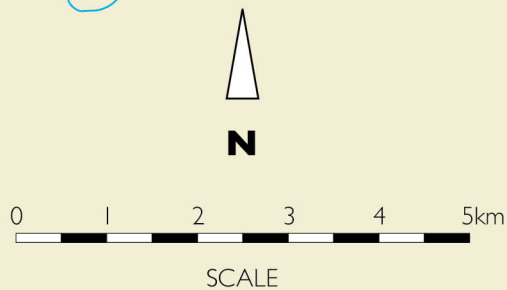
Practice minimal impact boating by accelerating gently in shallow water to avoid the underwater wash from the propeller jet stirring up silt and mud. This sediment clouds the water, disturbs sensitive weed beds, smothers aquatic plants and degrades fish habitat.

Remember

- Check your wash- 'if it's white it's all right - if it's brown slow down'.
- Fishing from a boat within 100 metres of an angler fishing from the shore is prohibited unless the boat is securely moored.
- Do not park on or obstruct boat ramps.



TASMAP
www.tasmap.tas.gov.au



Design and layout by
ILS Design Unit, DPIPW

Australian Government
Department of Agriculture, Fisheries and Forestry
Recreational Fishing Community Grants Programme
A project funded by the Australian Government
Recreational Fishing Community Grants Programme

Alliance Tasmania Inc
Anglers

Forestry Tasmania